



PLANTRIX®
MR260

CHEMTRIX
Scalable Flow Chemistry

Industrial Flow Production



CHEMTRIX BV IS HEADQUARTERED IN THE NETHERLANDS

WITH OUR GLOBAL OFFICES & LABORATORIES
WE ASSIST OUR CUSTOMERS WITH LOCAL CHEMICAL
& TECHNICAL SUPPORT

CHEMTRIX
Scalable Flow Chemistry

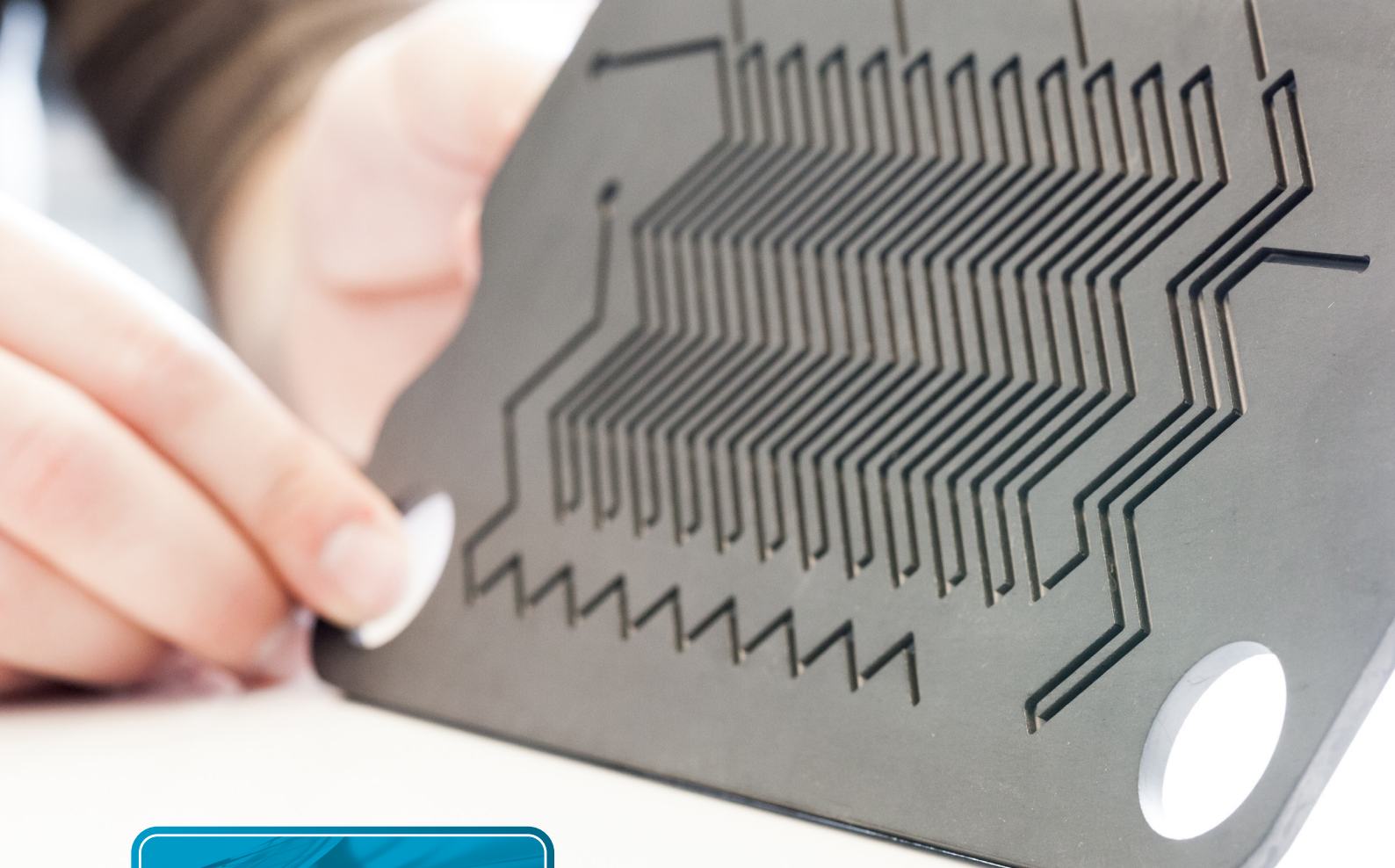
Chemtrix BV
Galvaniweg 8a
6101 XH Echt
The Netherlands

T +31 46 70 22 600
info@chemtrix.com
www.chemtrix.com

strategic partner of
3M Science.
Applied to Life.™

Details of our global offices and labs can be found at www.chemtrix.com/contact

The data in this brochure was valid at the time of publishing, and is subject to change without notice.
Chemtrix BV reserves the right to modify its product at any time without further obligation.



PLANTRIX®
MR260

Industrial Flow Production

Plantrix® MR260 is a ceramic (SiC) continuous flow reactor for process development, pilot & full-scale production. With integrated heat exchangers Plantrix® gives optimal control for challenging flow chemistry applications. The compact, modular construction of Plantrix® enables;

- Long term flexibility for process development & production
- A wide range of production volumes (1 to 10's kg/h)
- Use in a laboratory or pilot plant environment

CERAMIC (SiC) REACTORS

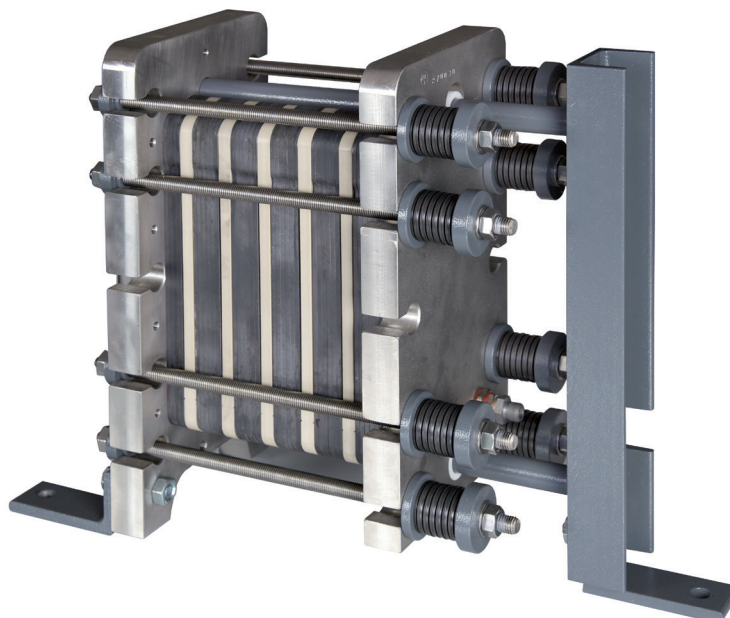
- Diffusion bonded 3M™ SiC reactors (braze & metal-free)
- Excellent heat & mass transfer
- FDA certified materials of construction
- TÜV certified
- German quality

SPECIFICATIONS

- Reaction types: up to $A + B \rightarrow P_1 + C \rightarrow P_2 + D \rightarrow P$
- Throughput: 1 to 36 l/h
- Flexible volume: 2.9 to 170 ml
- High operating pressure: up to 25 bar
- Wide temperature range: -30 to 200°C

DIMENSIONS

- 206 (W) x 435 (D) x 720 mm (H)



CHEMTRIX BV DEVELOPS & PRODUCES
CONTINUOUS FLOW REACTORS & SYSTEMS
FROM LAB TO PRODUCTION

